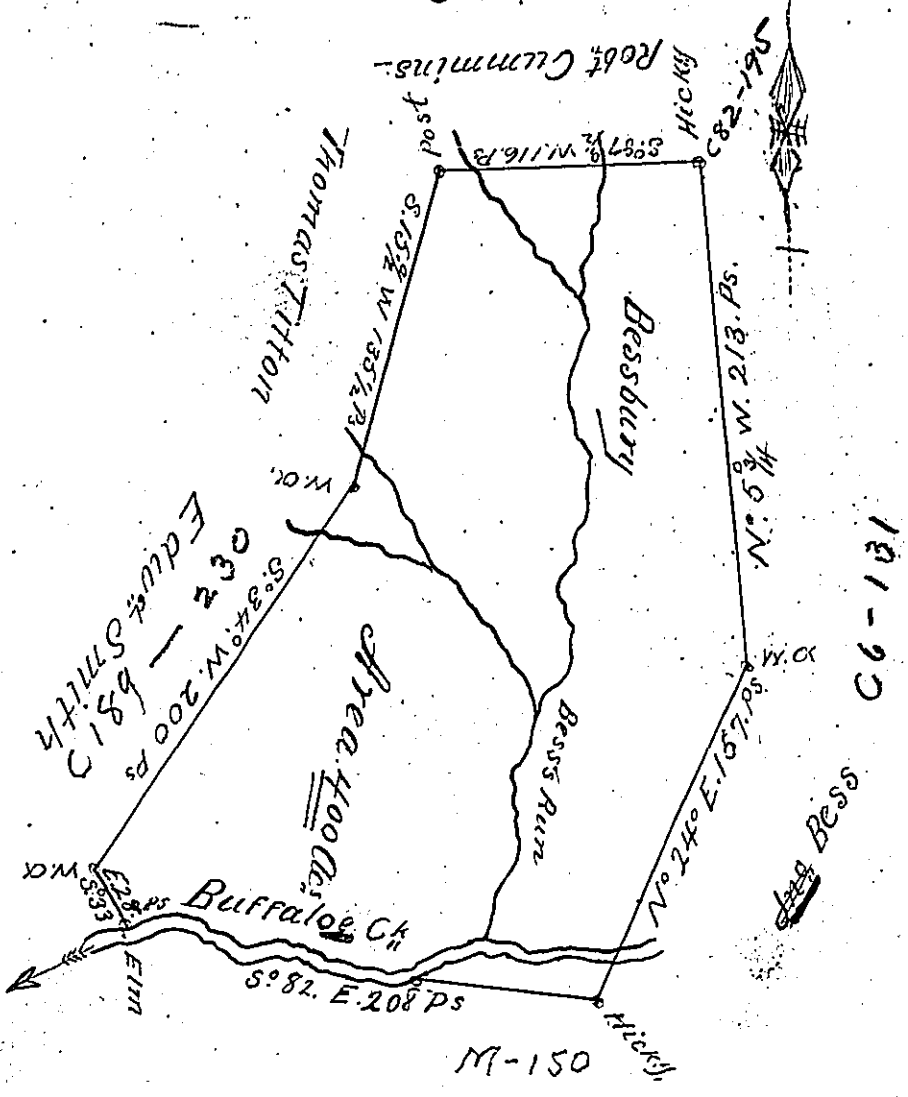


C34-40



A Draught of a Survey called "Bessbury" situate on the Main Branch of Buffaloe Ch in Washington County Contg 400 Ac. strict Measure executed May y<sup>e</sup>. 4<sup>th</sup>. 1786 in Consequence of a Certif<sup>g</sup> for 400 Ac. granted to J<sup>no</sup> Bess by the Commiss<sup>rs</sup> appointed by Virginia to adjust the Claims to unpatented Lands in the Counties of Monong<sup>a</sup> Yohg<sup>a</sup> and Ohio and duly entered with the County Surv<sup>r</sup> as appears from the List of Entries transmitted from the Surv<sup>r</sup> Generals Office - Ent<sup>d</sup> 17<sup>th</sup> June 1780

W<sup>ch</sup> 15 May 87

J<sup>no</sup> Lukens Esq<sup>r</sup> S<sup>r</sup> G<sup>l</sup>

Presley Nevill (S<sup>r</sup> D<sup>s</sup>)  
 Math<sup>r</sup> Ritchie

IN TESTIMONY that the above is a copy of the original remaining on file in the Department of Internal Affairs of Pennsylvania, made conformably to an Act of Assembly approved the 16th day of February, 1833, I have hereunto set my Hand and caused the Seal of said Department to be affixed at Harrisburg, this sixth day of October 1903



Isaac B. Pearson  
 Secretary of Internal Affairs.